



PERIOD
HOMES



The Galleries
Brentwood CM14 5FS
Guide Price £350,000-£375,000

The Galleries, Brentwood, CM14 5FS

GUIDE PRICE £350,000 - £375,000

VICTORIAN CONVERSION - A truly unique, beautifully presented one bedroom apartment situated in The Galleries, featuring a private entrance door and the most incredible high arched ceilings to the kitchen, living space and bedroom. Located within easy reach of Brentwood Railway Station and High Street.

The contemporary interior is presented impeccably, featuring ceiling heights in excess of 11ft with superb tall, original windows and 'honeycombed' ceilings. Accommodation commences via a private entrance door leading into an impressive open plan lounge/dining area, separate kitchen, double bedroom and a modern bathroom.

This property would suit first time buyers and investors alike, viewing highly recommended. One allocated parking space.

LEASE INFORMATION: Annual Service Charge (TBC) Circa £1,600 | Annual Ground Rent £250 | Lease Remaining: 160 years as at 2021





LOUNGE/DINER

22'11 x 11'8 (6.99m x 3.56m)

KITCHEN

9'9 x 8'8 (2.97m x 2.64m)

BEDROOM

14'10 x 8'8 (4.52m x 2.64m)

BATHROOM

7'1 x 6'4 (2.16m x 1.93m)

LEASE INFO.

160 years remaining (as at 2021)

SERVICE CHARGES

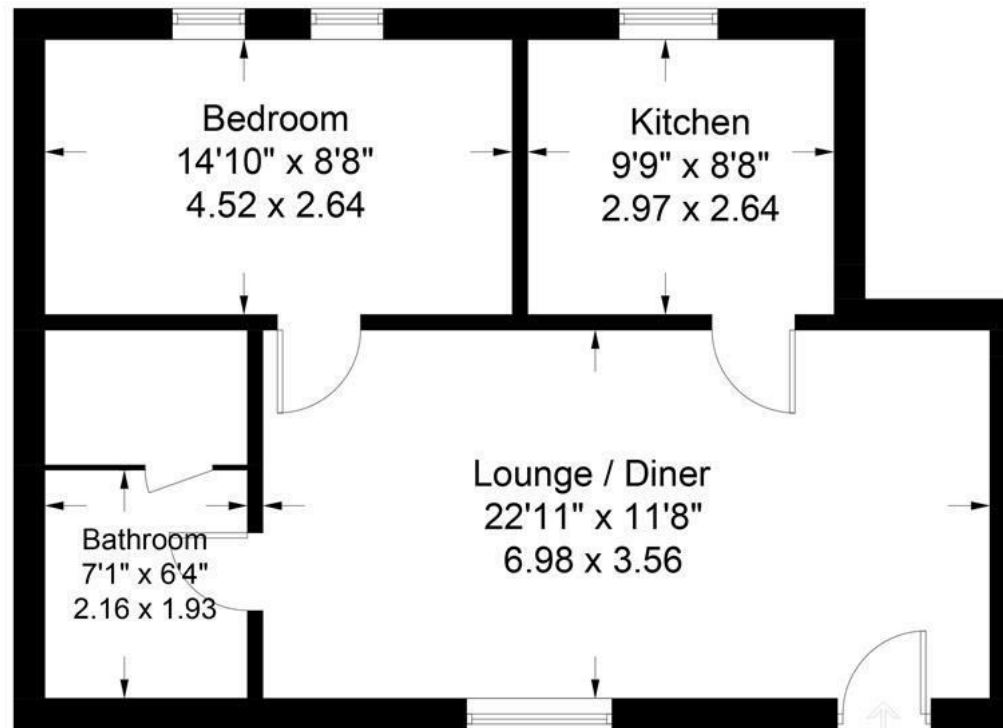
£1600 per annum

GROUND RENT - £250 per annum





Approximate Gross Internal Area = 578 sq ft / 53.7 sq m





Energy Efficiency Rating			
	Current	Potential	
Very energy efficient - lower running costs			
(92 plus) A			
(81-91) B			
(69-80) C			
(55-68) D			
(39-54) E			
(21-38) F			
(1-20) G			
Not energy efficient - higher running costs			
England & Wales	EU Directive 2002/91/EC		

Environmental Impact (CO ₂) Rating			
	Current	Potential	
Very environmentally friendly - lower CO ₂ emissions			
(92 plus) A			
(81-91) B			
(69-80) C			
(55-68) D			
(39-54) E			
(21-38) F			
(1-20) G			
Not environmentally friendly - higher CO ₂ emissions			
England & Wales	EU Directive 2002/91/EC		

PLEASE CALL 01277 288000 TO ARRANGE A VIEWING
www.periodhomes.co.uk

INDEPENDENT ESTATE AGENTS - VALUATIONS WITH NO OBLIGATION - PROFESSIONAL SERVICE

These particulars do not constitute any part of an offer or contract. All measurements are given as a guide, no liability can be accepted for any errors arising therefrom. No responsibility is taken for any other error, omission, or mis-statement in these particulars. Period Homes, a trading style of Walkers Village and Country Homes Limited do not make or give, whether in these particulars, during negotiations or otherwise, any representation whatsoever in relation to this property.

